



Assessors as co-administrators

(In case this function is to be used, you must contact your administrator)

For assessors

When exams are to be assessed: login as assessor

When exams are to be administered: login as administrator

Digital Exam

Aalborg Universitet

[Log in as administrator](#)

[Log in as assessor](#)

[Log in as student](#)

[Log in as invigilator](#)

When logged in, you can change your role:

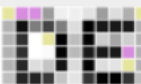
Help

Dansk

Log out

Login as co-administrator

ital
ten



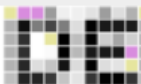
Help

Dansk

Log out

Login as assessor

digital
samen



Please note:

- As co-administrator, you must be aware that you can accidentally 'lock yourself out', when attempting to remove yourself as administrator for the exam. However, you will be warned prior to this action.
- Under 'Exam data', you can edit at the same level as your exam administrator.